



NEWS RELEASE

January 17, 2017

Releasing Authority:
Commander Ana Lalley
Elgin Police Department
Phone: 847-289-2677

FOR IMMEDIATE RELEASE:

Elgin 2016 Statistics Reflect a 3% Overall Decrease in Part I Crime

Last year Elgin experienced a 3% decrease in Part I crimes from 2015 continuing a 44 year low. The Part I crime rate encompasses a standardized federal measurement of serious crimes that are committed against people and property. To illustrate a comparison, in 1972 Elgin's population was approximately 55,000 people. During that year the city experienced 2,659 Part I crimes. In 2016, 44 years later with a population double that of 1972, the city experienced 1,807 Part I crimes a 32% decrease in comparison.

	1972	1989*	2016
<i>Part I Crimes Reported</i>	2,659	4,905	1,807

**Highest year on record*

Homicides:

Two homicides occurred in Elgin last year, a decrease of two from 2015.

- Alberto J. Sepeda was arrested and charged with the murder of Norbert Gutierrez who was shot on November 13, 2016 in the 800 block of Morgan Avenue.
- A 17 year-old juvenile was arrested and charged with the murder of Timothy L. Jones who was shot on December 27, 2016 in the 1600 block of Maple Lane.

Statistical Highlights:

When comparing year 2016 to 2015:

- Violent crime remained similar from 2015. In over twenty years only two years reflected a lower violent crime count than the past two years.
- Shooting victims are down 48% from 21 in 2015 to 11 in 2016.
- Elgin's residential and commercial burglaries are at an all-time low with a reduction of 14%.
- Shots-fired incidents increased 10% from 58 in 2015 to 64 in 2016.
- Vehicle burglaries experienced a 15% increase.

Chief Jeffrey Swoboda credits many community involvement initiatives in reducing residential and commercial burglaries such as the *'Security through Surveillance'* training class which encourages home and business owners to effectively utilize their surveillance cameras to prevent and solve crimes. The department also continued with programs designed to encourage community involvement and neighborhood awareness such as several community conversations, Coffee with a Cop, women's self-defense classes, Chief for a Day, Pokemon Go events, National Night Out, a citizen's crime scene investigation class, and EPD Elves. These programs further complimented existing opportunities such as the chief's monthly community meetings, the Citizens Police Academy, Spanish Citizens Police Academy, Senior Citizens Police Academy, Citizens Police Academy Alumni Association, Community Emergency Response Team training, the Explorers Post, and Walk-and-Talks.

Other highlighted initiatives this year include the expansion of our Neighborhood Officer Program (NOPE) to include ten neighborhoods, providing training to citizens on use of force procedures as a way to communicate policing techniques and practices. The department also finalized the selection of body worn cameras and will implement the use of cameras in early 2017. Social media has also proven to be a strong venue for two way communication with the community and the department's following increased immensely during 2016, reaching over 25,000 likes.

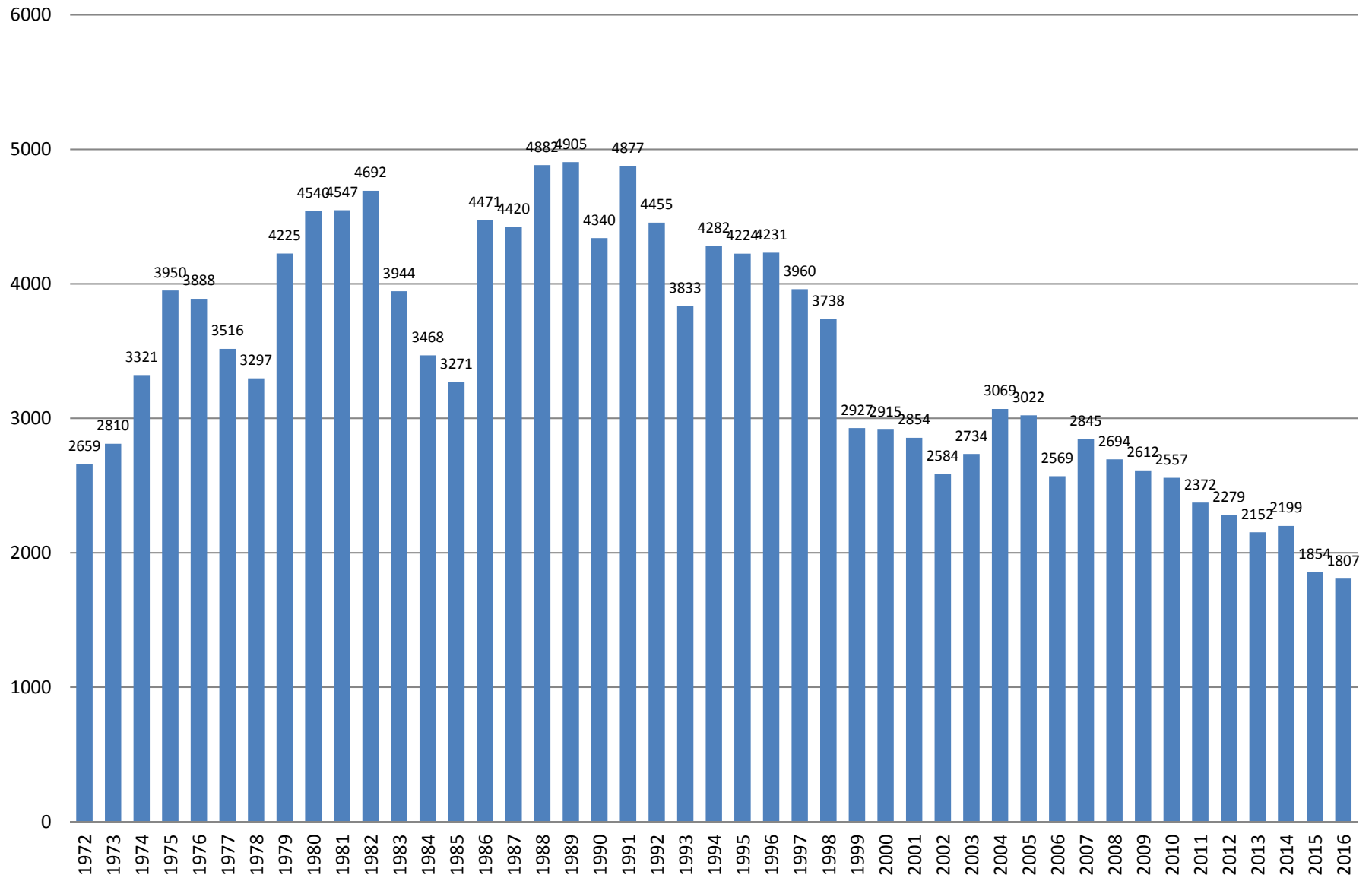
Chief Swoboda stated, "While the fact is that overall crime is down 3% we still have an increase in other areas such as burglaries to motor vehicles. We would like to remind citizens of our community initiative *'If You Like It Lock It'* and stress that 53% of our vehicle burglaries were unlocked vehicle doors. Robberies decreased by 3% and we found that 8% of all robberies had a component related to social media, 10% were known offenders, and 26% occurred in a business. As technology continues to have a greater presence in our day-to-day activities we want to stress the importance of being cautious when utilizing social media and encourage business owners to implement security measures to help reduce these crimes. Our violent crime has remained similar from 2015, and although near a 20 year low we are vigilant in reducing this type of crime in our community. The exceptional work by the police department's staff along with our citizen's involvement has resulted in a successful year for the police department but we recognize that we have more work to do. In 2017 we look forward to utilizing new technological resources, continuing to reduce crime, and even more community engagement efforts."

Part I Crimes 2015 - 2016 Comparison

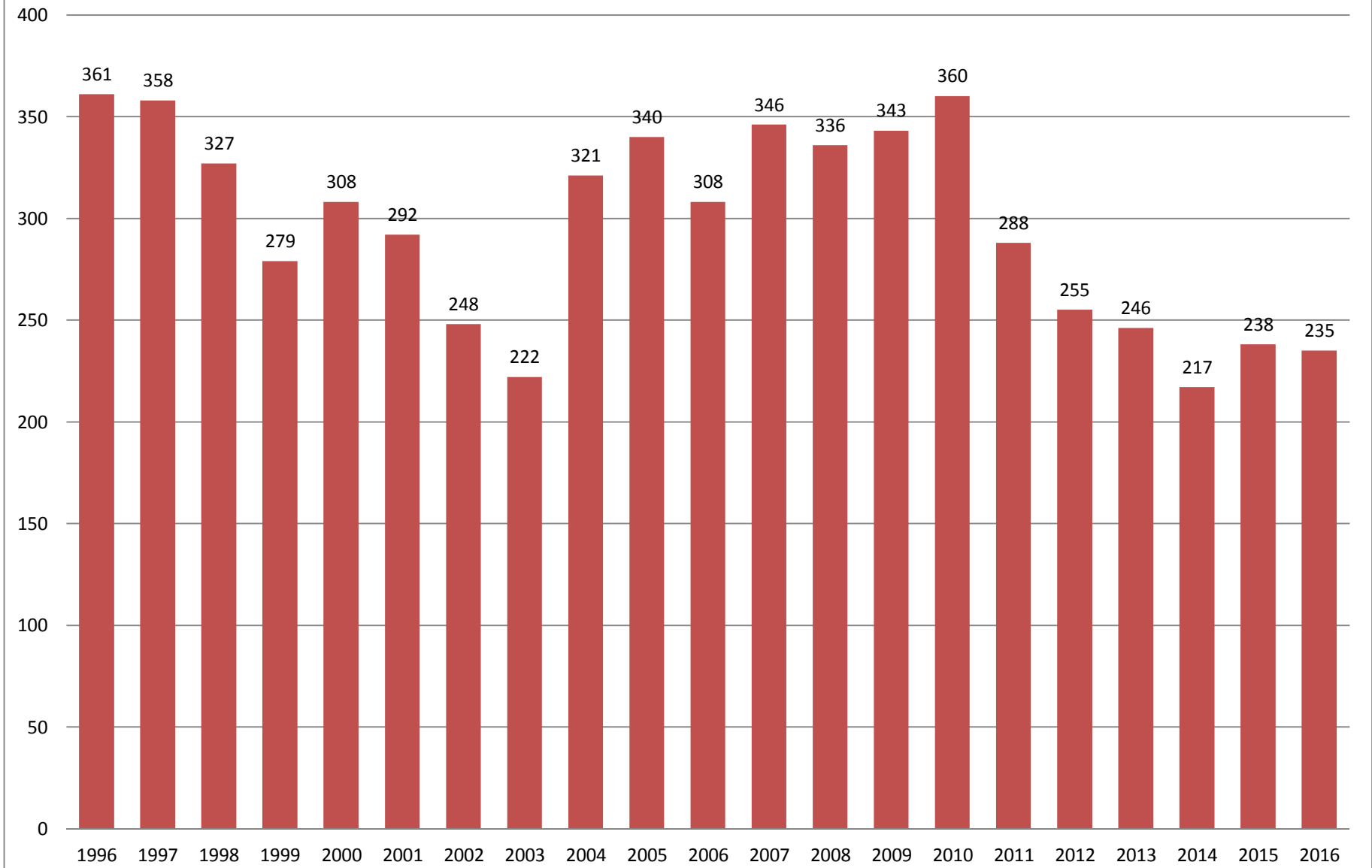
Part I Crimes	Jan-Dec 2015 Crimes	Jan-Dec 2016 Crimes	% of Change
Homicide	4	2	-50
Forcible Rape/Criminal Sexual Assault	39	36	-8
Robbery	64	62	-3
*Battery	82	89	9
*Assault	49	46	-6
Burglary	253	217	-14
Burglary to Motor Vehicle	271	311	15
Theft	1011	967	-4
Motor Vehicle Theft	67	67	0
*Arson	14	10	-29
Total Part I Crimes	1854	1807	-3

*Incidents are categorized as Part I & Part II depending on the severity of the crime

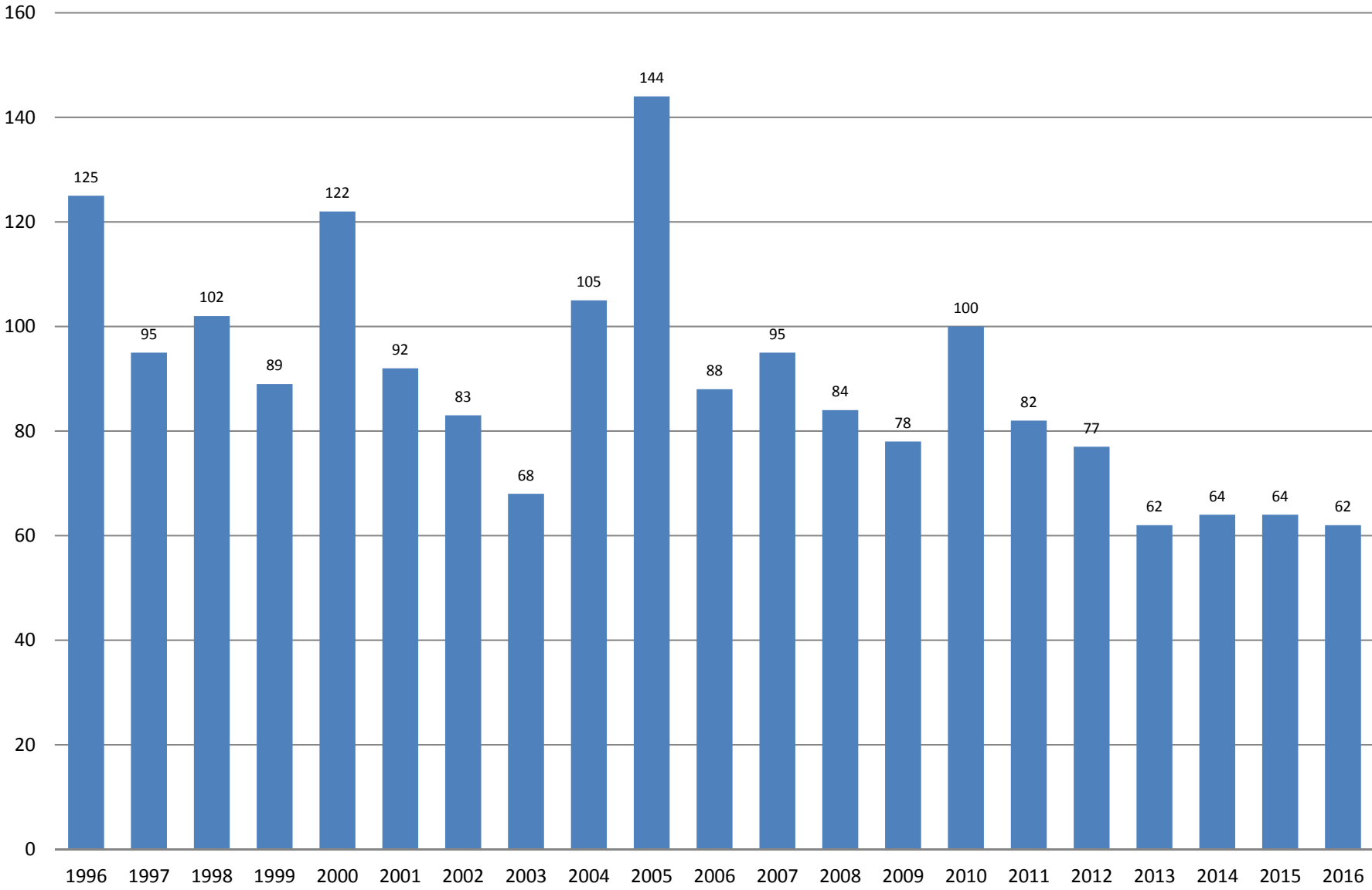
Elgin 40 + Year Low - Part I Crime 1972 - 2016



Elgin Violent Crime 1996 - 2016



Elgin Robbery 1996 - 2016



Elgin Burglary and Burglary to Vehicle 1996 - 2016

