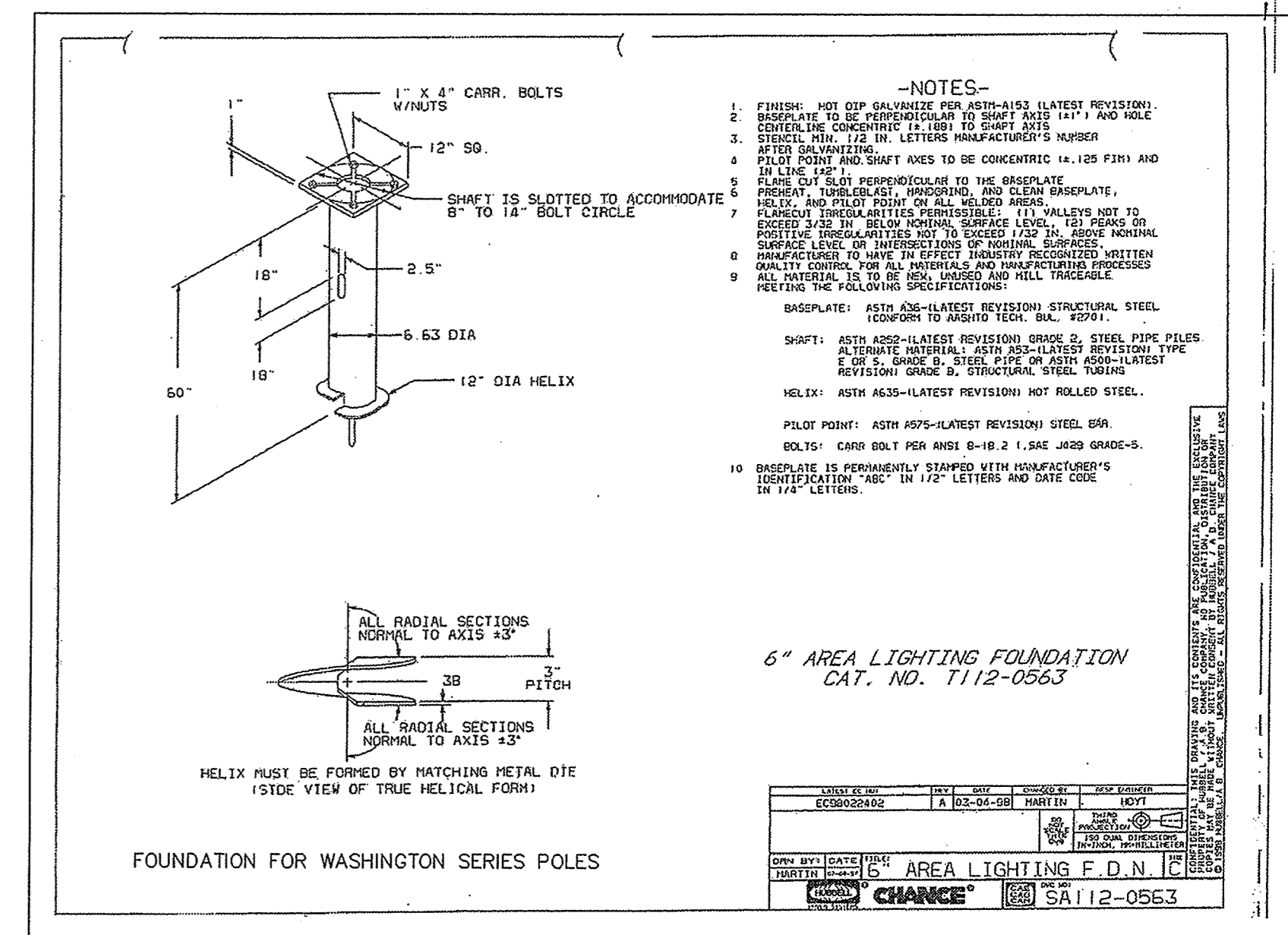
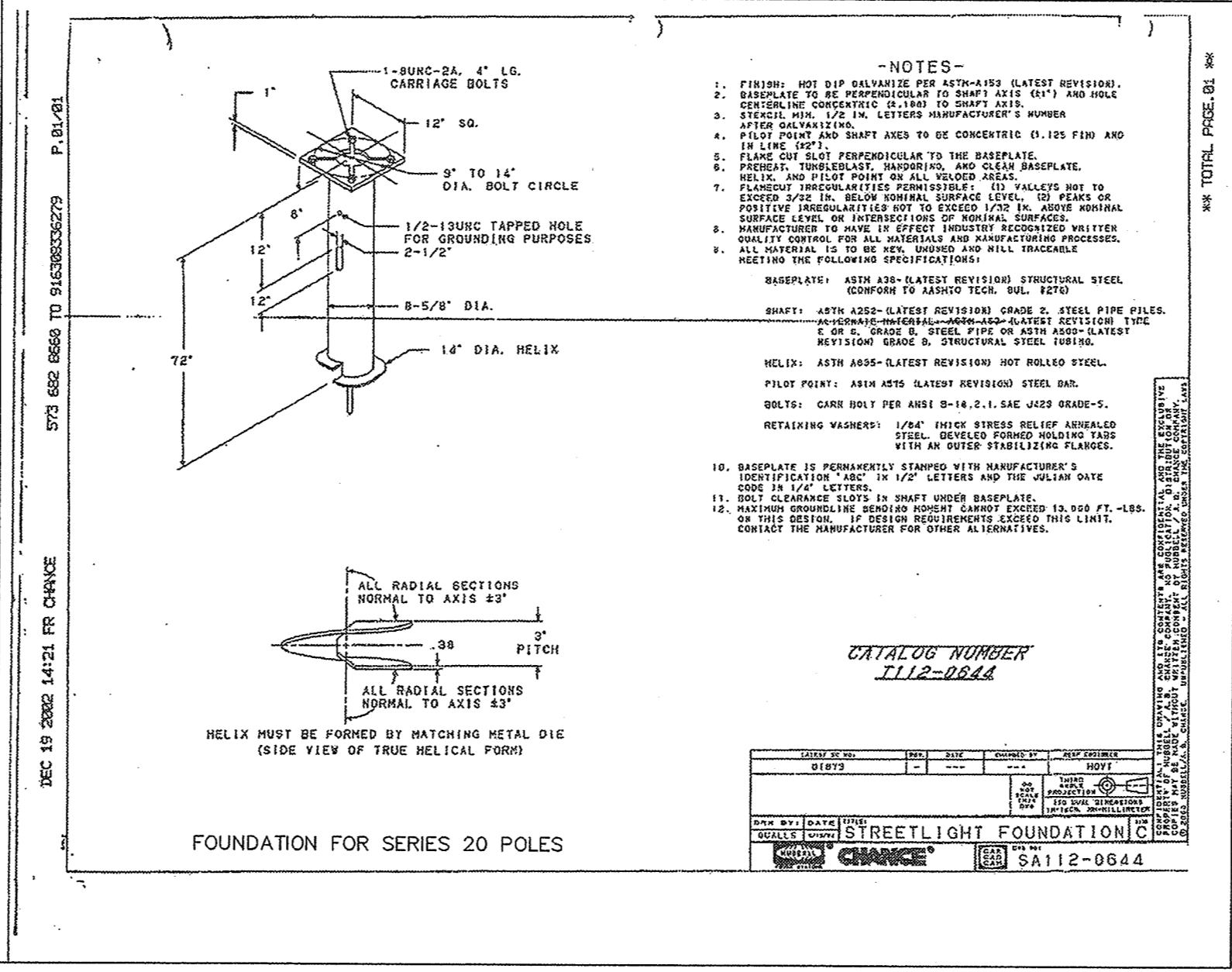
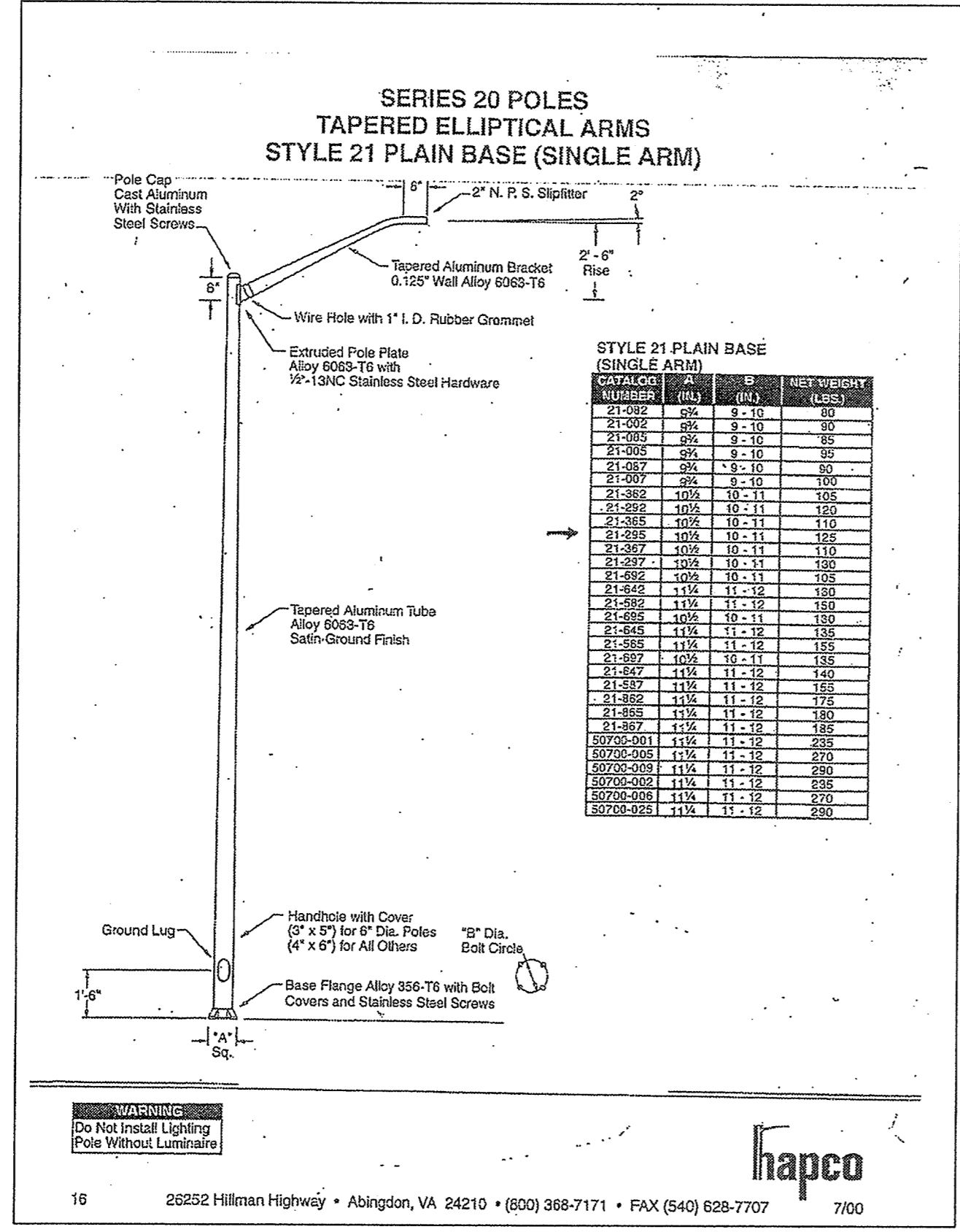
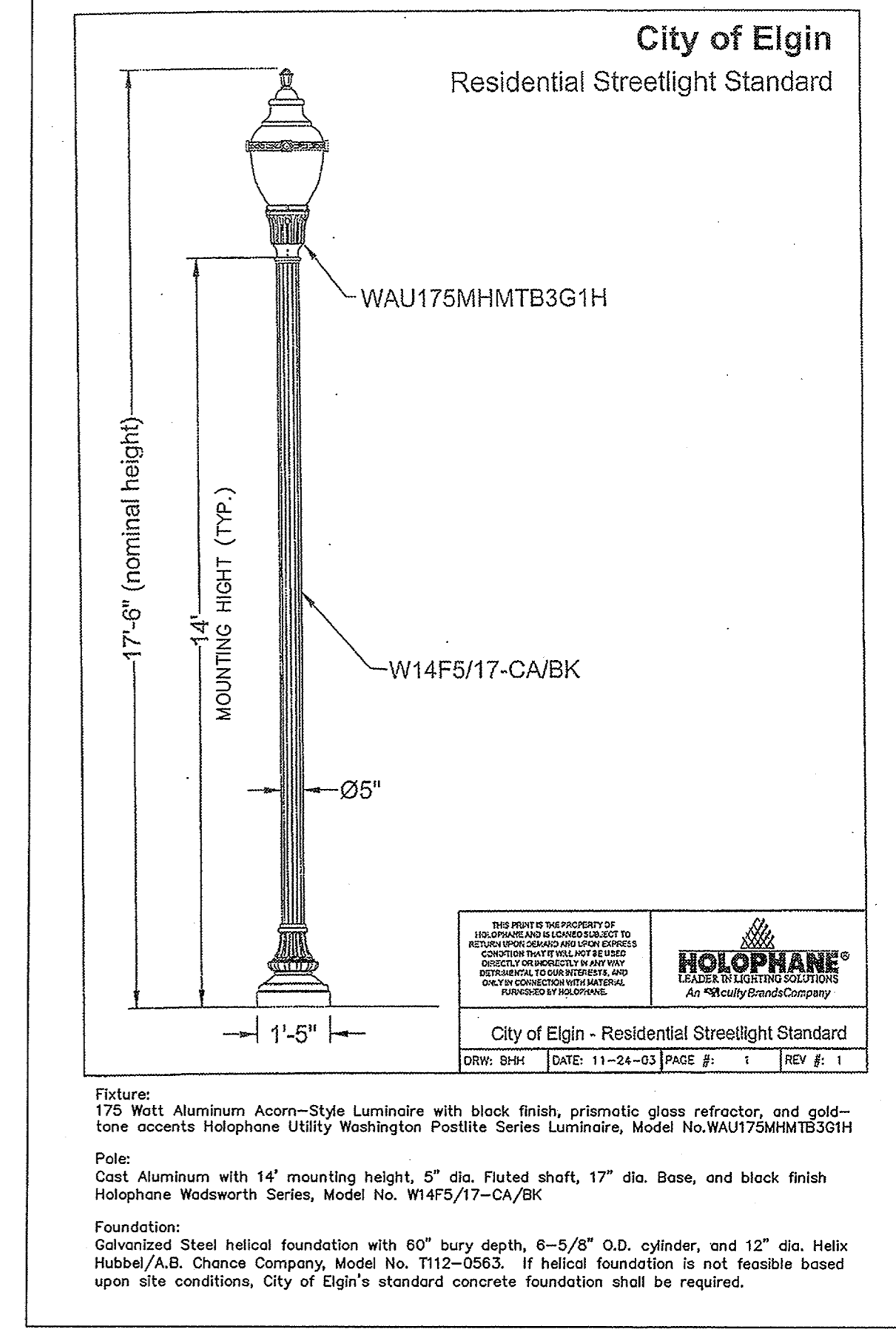
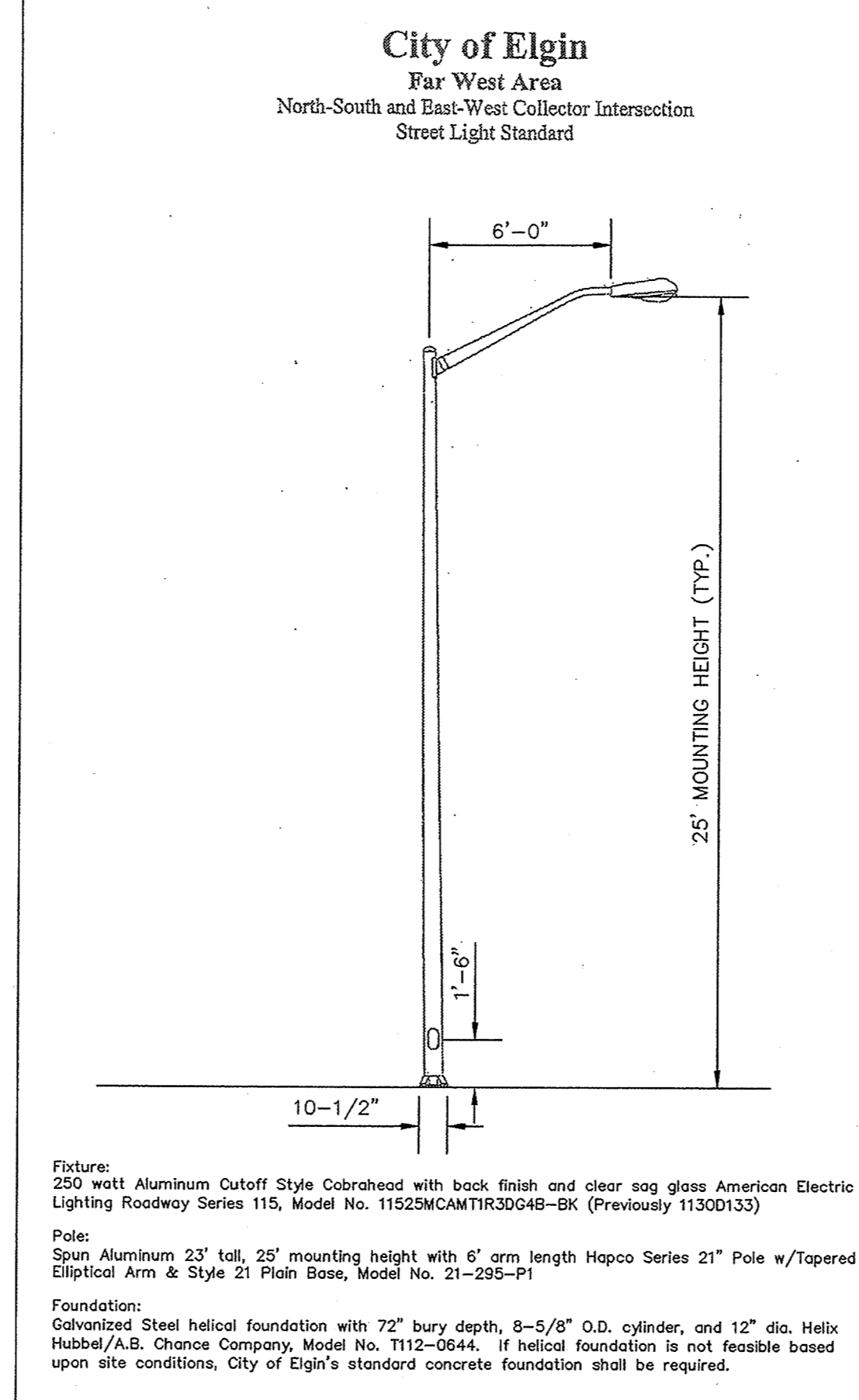


STYLE 21 PLAIN BASE (SINGLE ARM)

CATALOG NUMBER	NOMINAL MOUNTING HEIGHT (FT.)	SHAFT DIMENSIONS			ARM LENGTH (FT.)	MAX. LUMINAIRE WT. (LBS.)	MAXIMUM EPA (1)			
		DIA. (IN.)	LENGTH (FT.-IN.)	WALL THICK. (IN.)			80	90	100	110
21-082	20	6 x 4 1/2	18-0	0.156	4	75	2.0	2.0	2.0	1.6
21-002	20	6 x 4 1/2	18-0	0.188	4	75	2.0	2.0	2.0	1.6
21-085	20	6 x 4 1/2	18-0	0.188	6	71	2.0	2.0	2.0	1.6
21-005	20	6 x 4 1/2	18-0	0.188	6	71	2.0	2.0	2.0	1.6
21-087	20	6 x 4 1/2	18-0	0.156	8	52	2.0	1.8	1.2	0.8
21-007	20	6 x 4 1/2	18-0	0.188	8	52	2.0	1.8	1.2	0.8
21-362	25	7 x 4 1/2	23-0	0.156	4	75	2.0	2.0	2.0	1.6
21-292	25	7 x 4 1/2	23-0	0.188	4	75	2.0	2.0	2.0	1.6
21-365	25	7 x 4 1/2	23-0	0.156	6	71	2.0	2.0	2.0	1.6
21-295	25	7 x 4 1/2	23-0	0.188	6	71	2.0	2.0	2.0	1.6
21-367	25	7 x 4 1/2	23-0	0.156	8	52	2.0	1.8	1.2	0.8
21-297	25	7 x 4 1/2	23-0	0.188	8	52	2.0	1.8	1.2	0.8
21-692	30	7 x 4 1/2	28-0	0.156	4	75	2.0	2.0	2.0	1.6
21-642	30	7 x 4 1/2	28-0	0.156	6	71	2.0	2.0	2.0	1.6
21-582	30	7 x 4 1/2	28-0	0.188	4	75	2.0	2.0	2.0	1.6
21-695	30	7 x 4 1/2	28-0	0.156	6	71	2.0	1.8	1.0	-
21-545	30	7 x 4 1/2	28-0	0.156	6	71	2.0	2.0	1.8	1.6
21-585	30	7 x 4 1/2	28-0	0.188	6	71	2.0	2.0	2.0	1.6
21-697	30	7 x 4 1/2	28-0	0.156	8	52	2.0	1.8	1.2	0.8
21-647	30	7 x 4 1/2	28-0	0.156	8	52	2.0	1.8	1.2	0.8
21-587	30	7 x 4 1/2	28-0	0.188	8	52	2.0	1.8	1.2	0.8
21-962	35	8 x 4 1/2	33-0	0.188	4	75	2.0	2.0	1.8	1.3
21-865	35	8 x 4 1/2	33-0	0.188	6	71	2.0	2.0	2.0	1.6
21-867	35	8 x 4 1/2	33-0	0.188	8	52	2.0	1.8	1.1	-
21-867	35	8 x 4 1/2	33-0	0.188	8	52	2.0	1.8	1.1	-
50700-001	40	8 x 4 1/2	38-0	0.188	6	71	1.8	1.4	-	-
50700-005	40	8 x 4 1/2	38-0	0.219	6	71	2.0	1.8	1.3	-
50700-009	40	8 x 4 1/2	38-0	0.250	6	71	2.0	2.0	1.6	1.1
50700-002	40	8 x 4 1/2	38-0	0.188	8	52	2.0	0.8	-	-
50700-006	40	8 x 4 1/2	38-0	0.219	8	52	1.8	1.2	0.7	-
50700-025	40	8 x 4 1/2	38-0	0.250	8	52	2.0	1.8	1.3	-

NOTES:
 (1) Effective Projected Area (EPA) in Square Feet. EPAs calculated using base wind velocity (mph) indicated plus 80% gust factor.
 (2) Standard Finish - Satin Ground
 OPTIONAL FINISHES: (add as suffix)
 P1 Black Powder Paint
 P10 Light Grey Powder Paint
 P21 White Powder Paint
 P31 Dark Bronze Powder Paint
 P43 Dark Green Powder Paint
 * Other finishes available, consult factory.



PREPARED FOR:
TOWN & COUNTRY HOMES
 1806 SOUTH HIGHLAND AVENUE
 LOMBARD, ILLINOIS 60148
 (630) 953-2222

PREPARED BY:
CEMCON, Ltd.
 Consulting Engineers, Land Surveyors & Planners
 2280 White Oak Circle, Suite 100
 Aurora, Illinois 60504-9675
 Ph: 630.862.2100 Fax: 630.862.2199
 E-Mail: cadd@cemcon.com Website: www.cemcon.com

NO.		DATE		DESCRIPTION	
AA	01-21-04/JMM	ADDED SHEET 8A			

FILE NAME:		DSGN. BY:		JOB NO.:		FLD. BK./PG.:		SHEET NO.:	
OVR_UTIL		MJM		613.010		N/A		8A of 57	
DISC. NUMBER:		DRN. BY:		DATE:		SCALE:			
613010		CNW		03-21-03		1" = 100'			

TAB: OVR LIGHT 4
 XREF: N/A
 Copyright © 2003 Cemcon, Ltd. All rights reserved.